



LQBW-EXP

BRIARWOOD LIBRARY RENOVATION

BRIARWOOD CIVIC ASSOCIATION PRESENTATION | 2026.03.25

**VERONA
CARPENTER
ARCHITECTS**

COMMUNITY DISTRICT 8









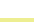
CURRENT PHASE: Final Design submitted March 2026

PROJECTED CONSTRUCTION START: Summer 2027

ANTICIPATED BUILDING CONSTRUCTION SUBSTANTIAL COMPLETION : Fall 2029

COMMUNITY DISTRICT 8

AREA BY LAND USE TYPE:

-  TRANSPORTATION & UTILITY
-  VACANT
-  MIXED RES & COMMERCIAL
-  COMMERCIAL & OFFICE
-  MULTIFAMILY ELEVATOR
-  PUBLIC FACILITIES & INSTITUTIONS
-  MULTI-FAMILY WALK UP
-  OPEN & OUTDOOR GREEN SPACE
-  1 & 2 FAMILY

Source: *Land Use in Community District 8*
communityprofiles.planning.nyc.gov/queens/8


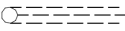

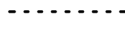



-  BRIARWOOD LIBRARY
-  1-2 STORIES
-  3-5 STORIES
-  OVER 5 STORIES



THE NEIGHBORHOOD

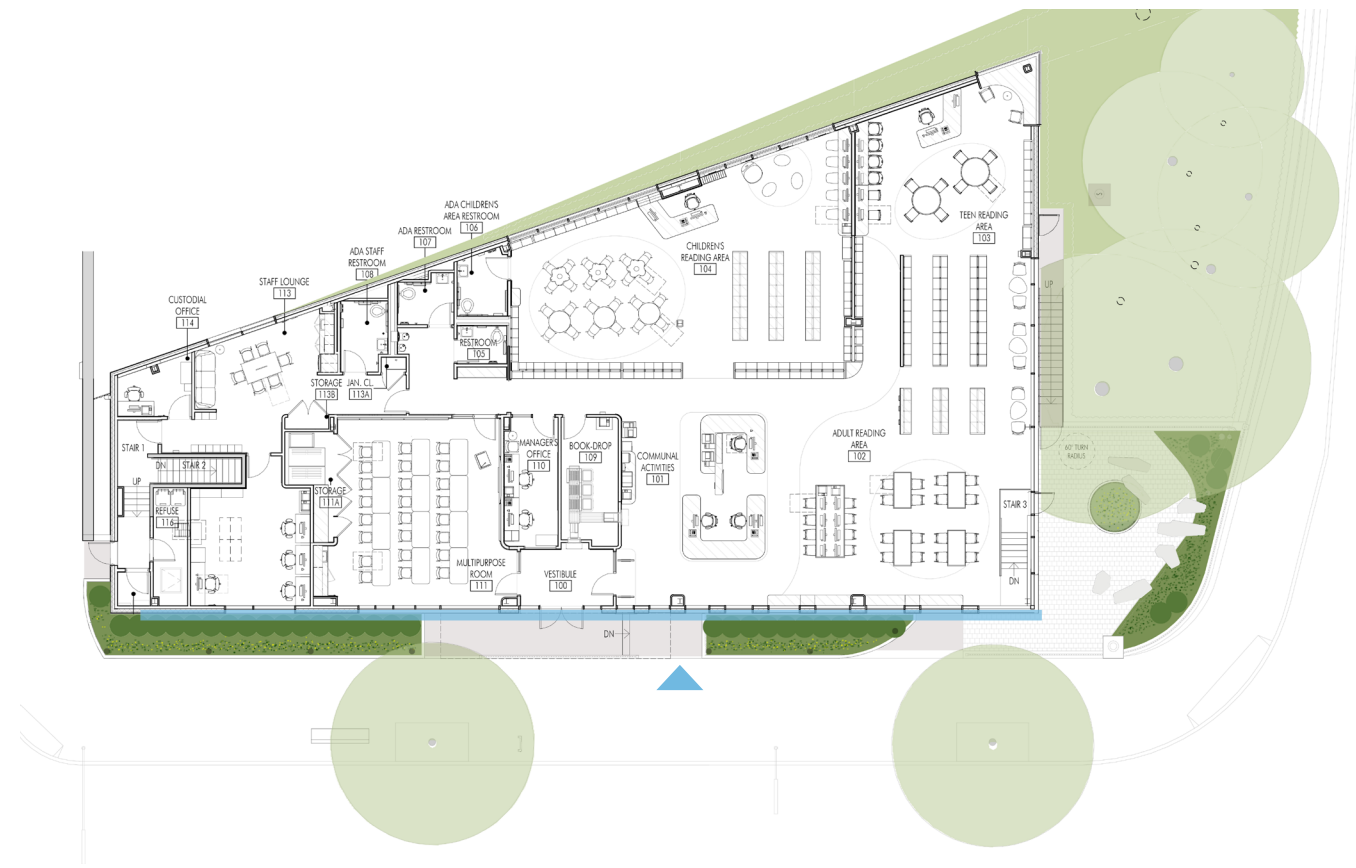
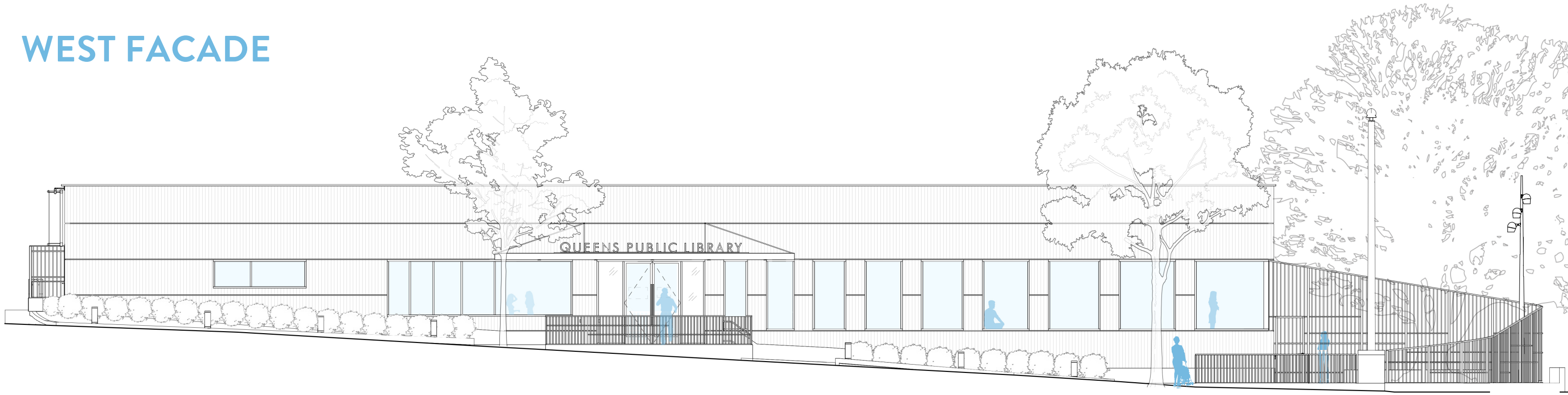
LEGEND

-  SOLAR PANEL (APPROX. LOCATION)
-  DOT STATE SEWER
-  DEP CORRIDOR
-  DOT TURNAROUND
-  PROPERTY LINE

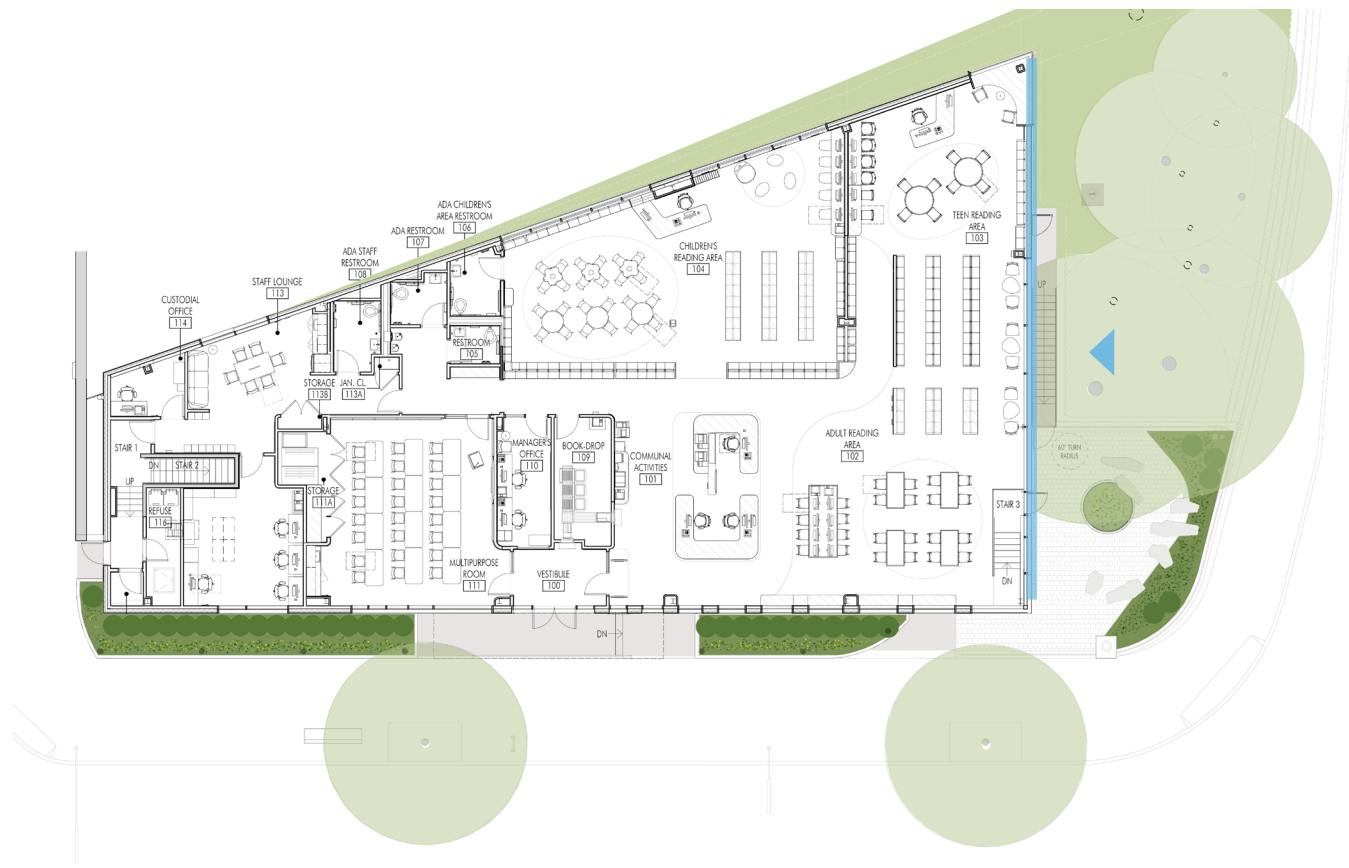




WEST FACADE

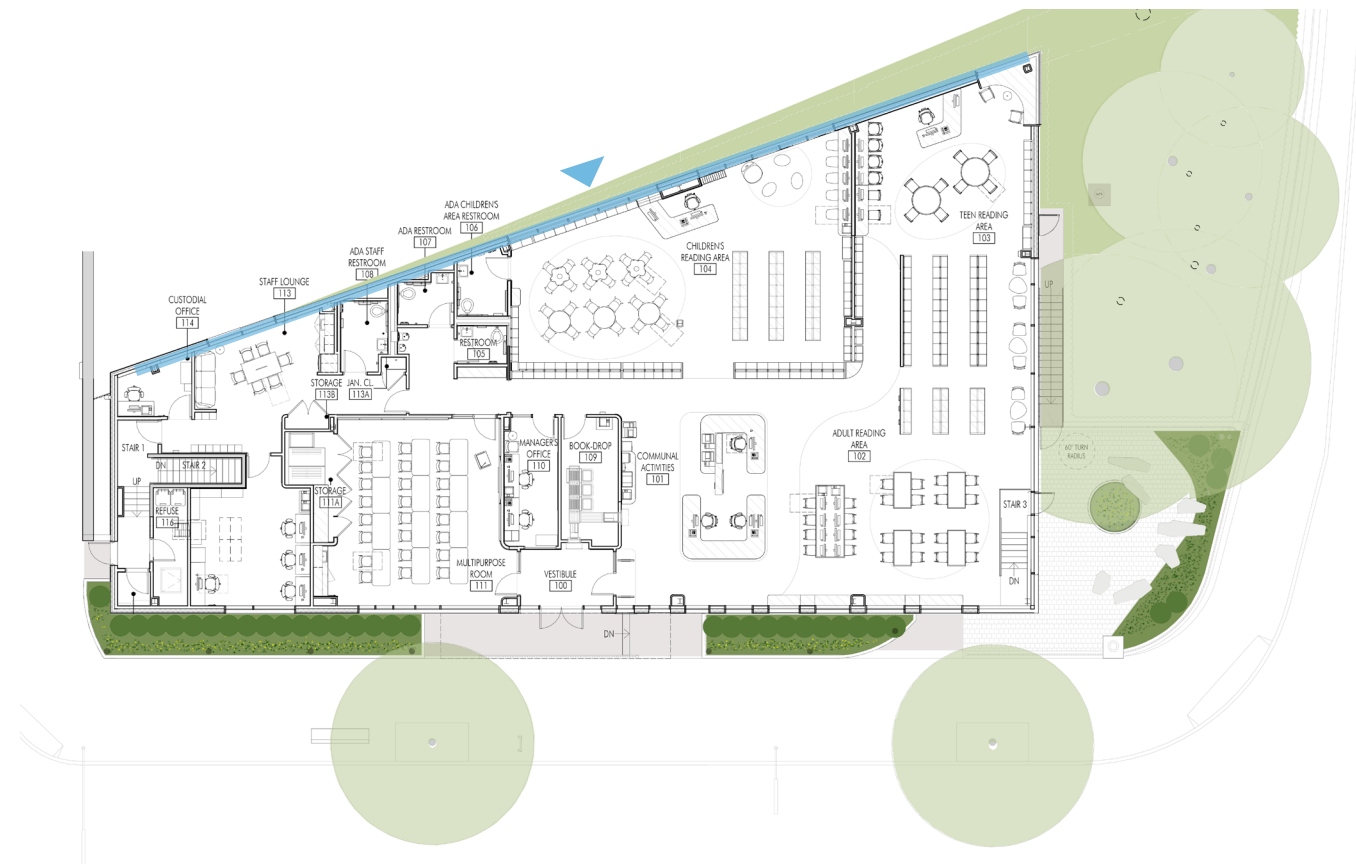
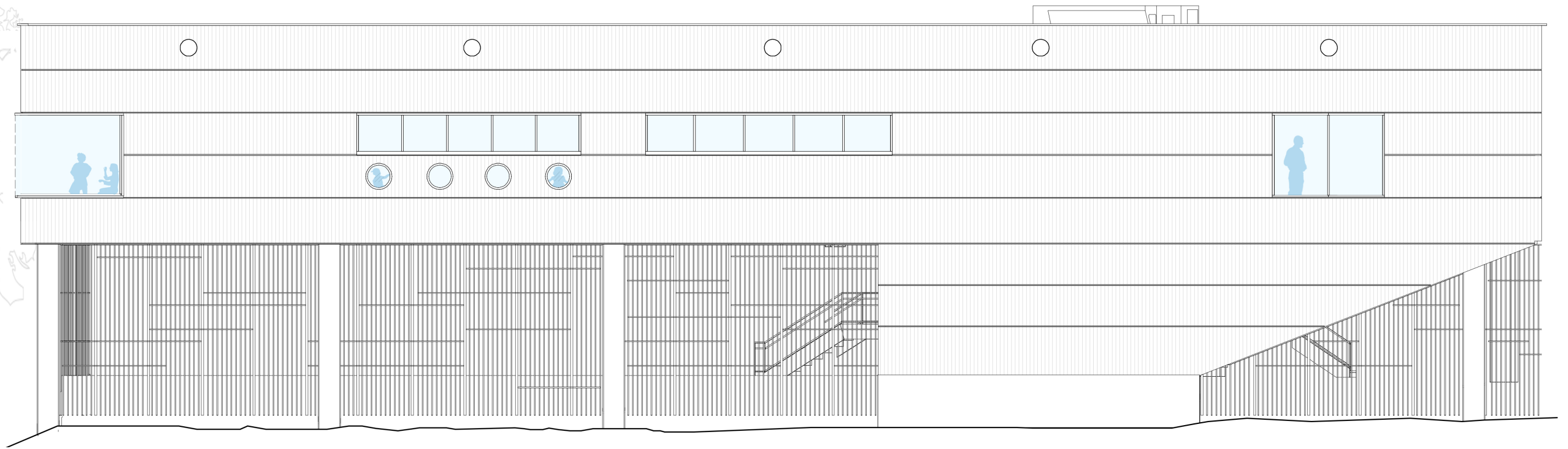


SOUTH FACADE



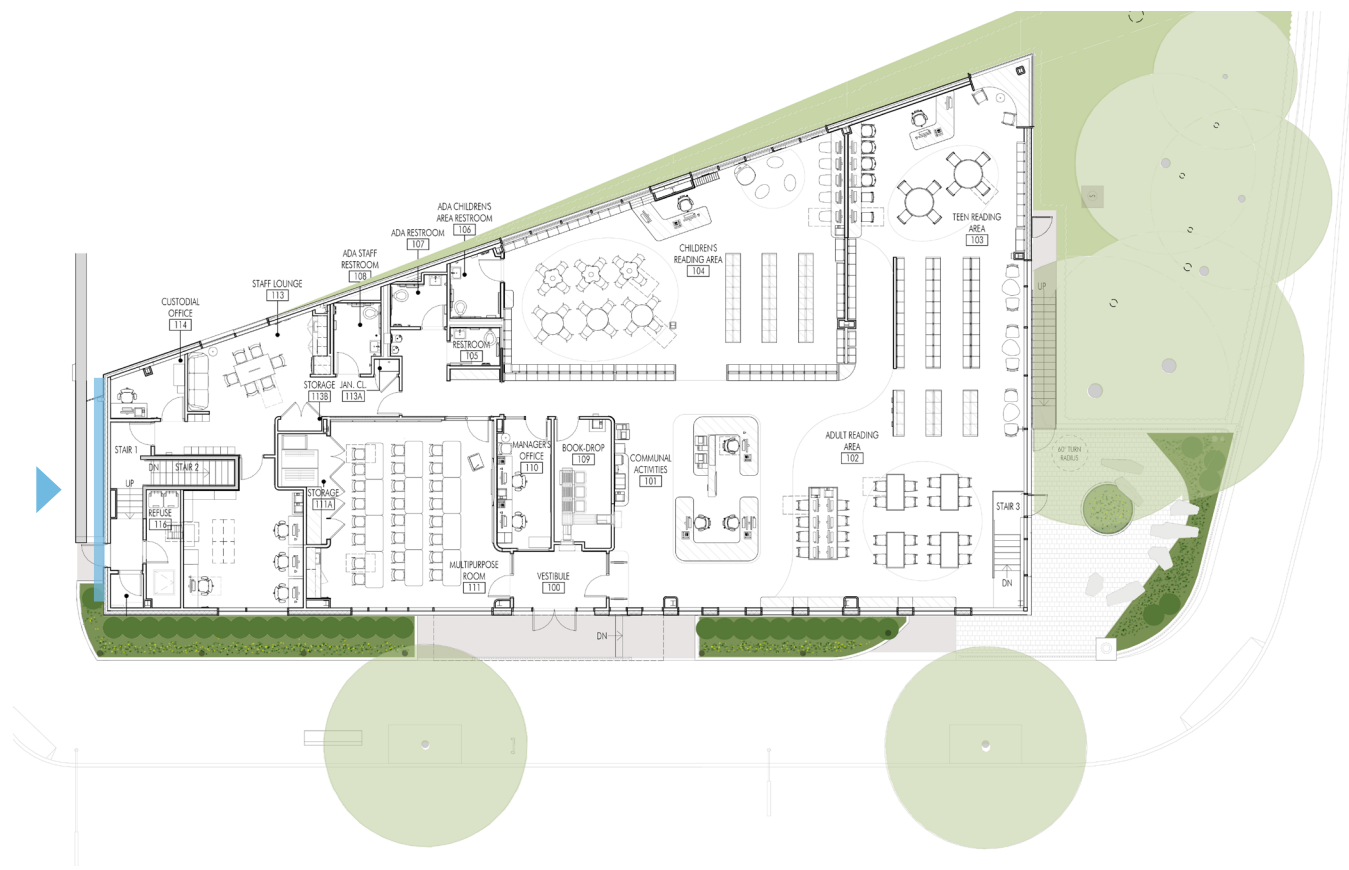
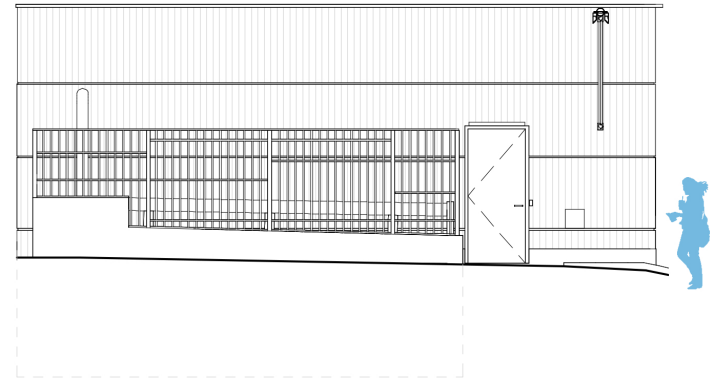


EAST FACADE





NORTH FACADE



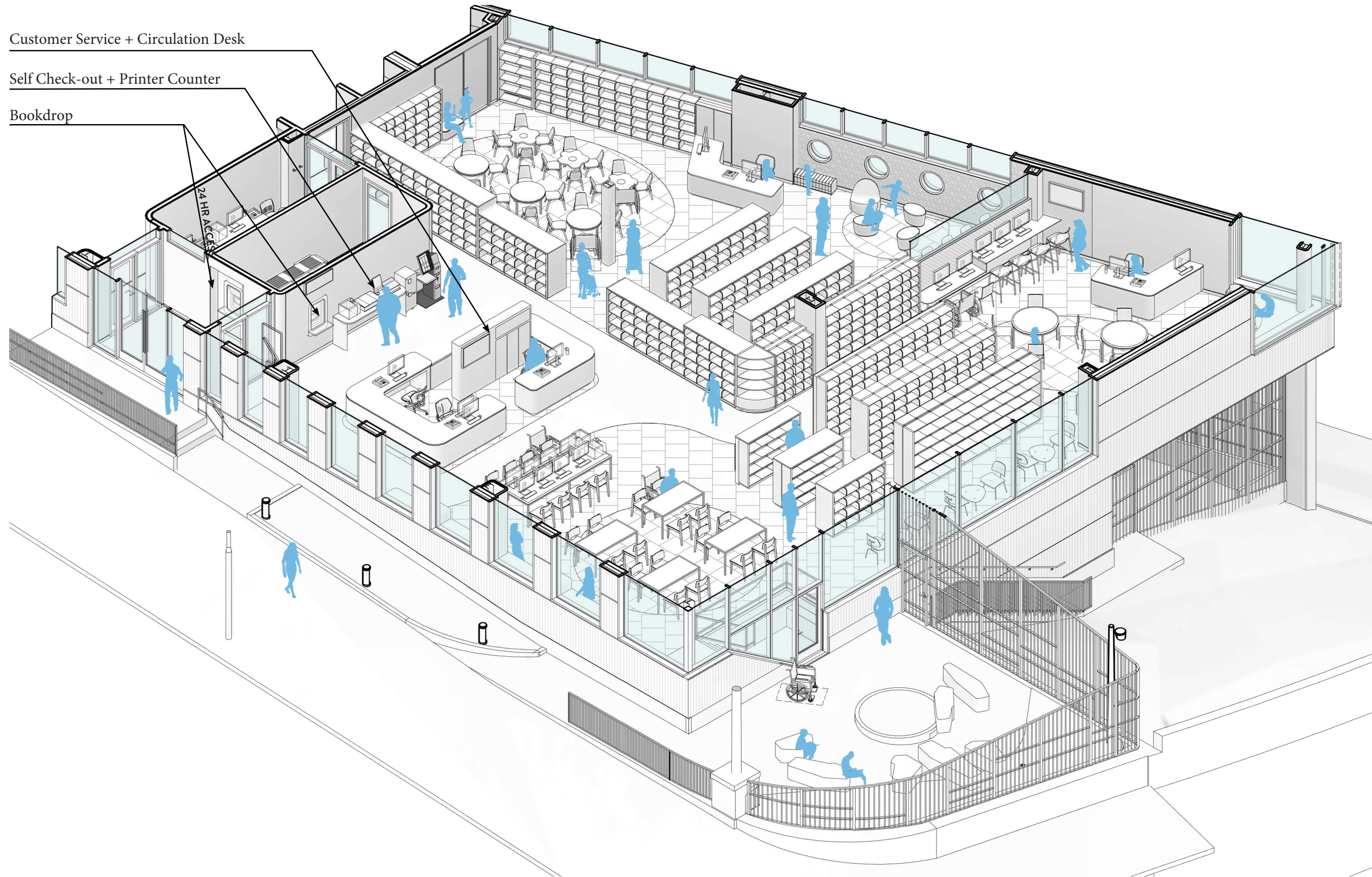


COMMUNAL ACTIVITIES

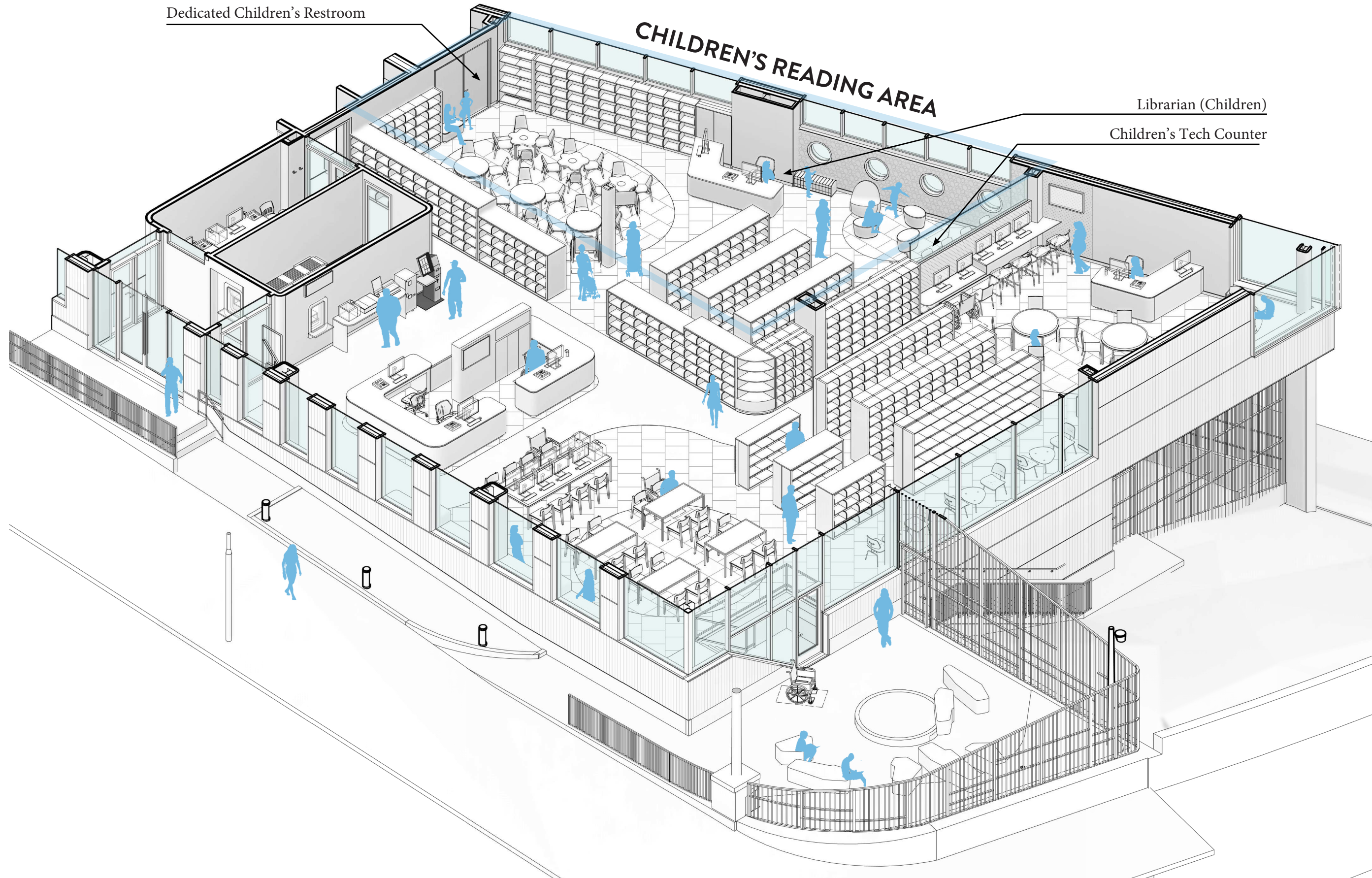
Customer Service + Circulation Desk

Self Check-out + Printer Counter

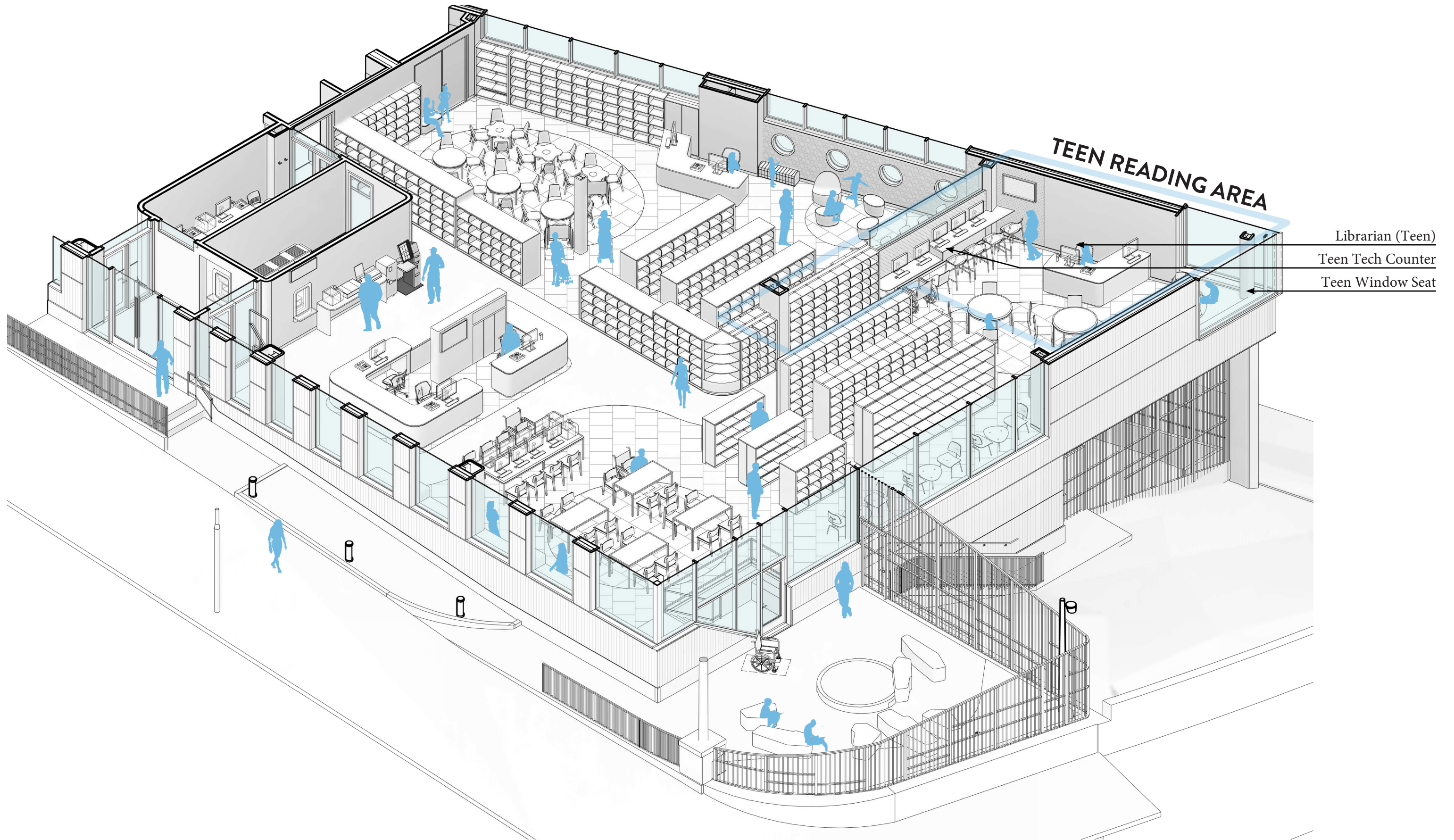
Bookdrop



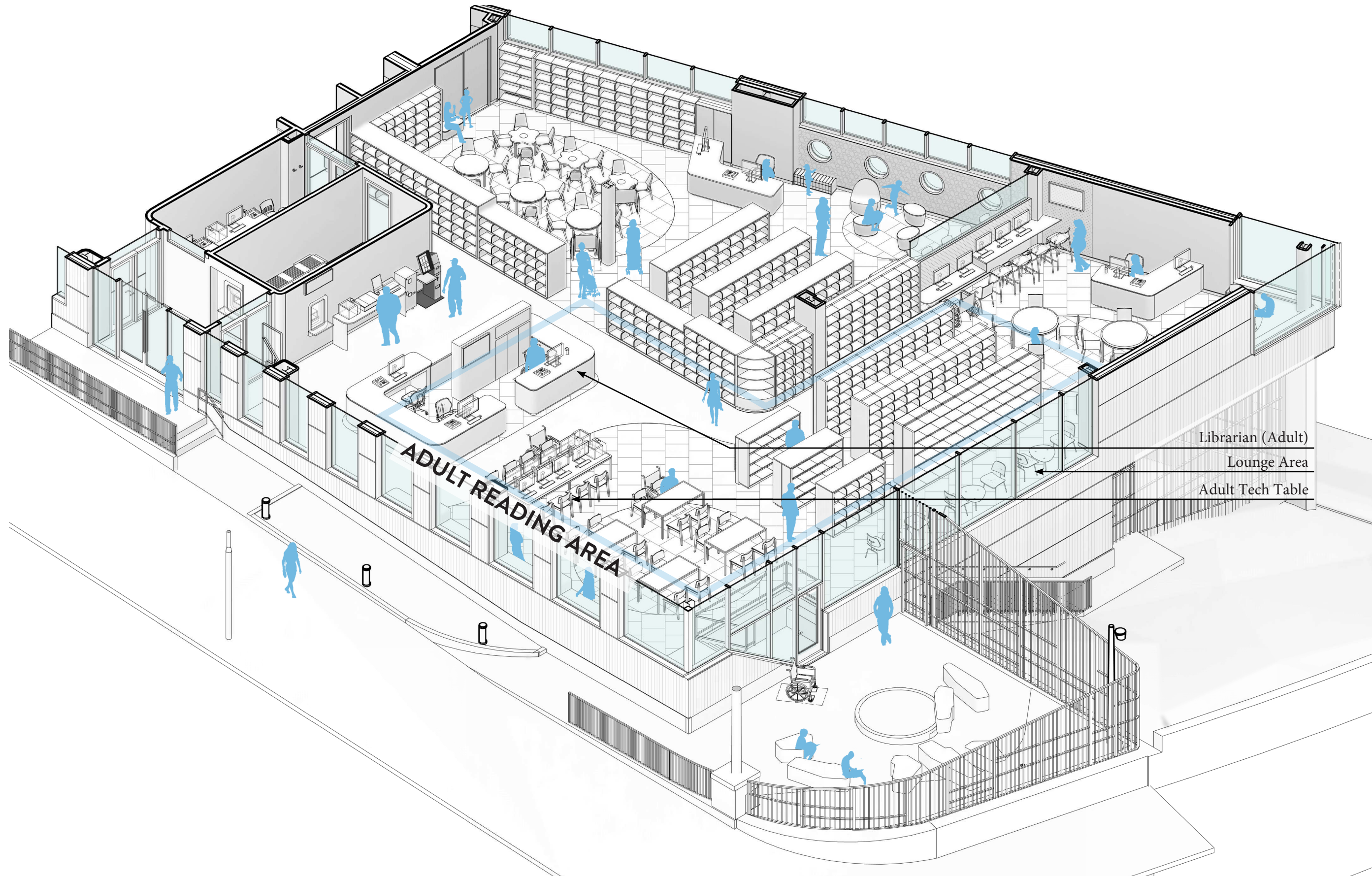
CHILDREN



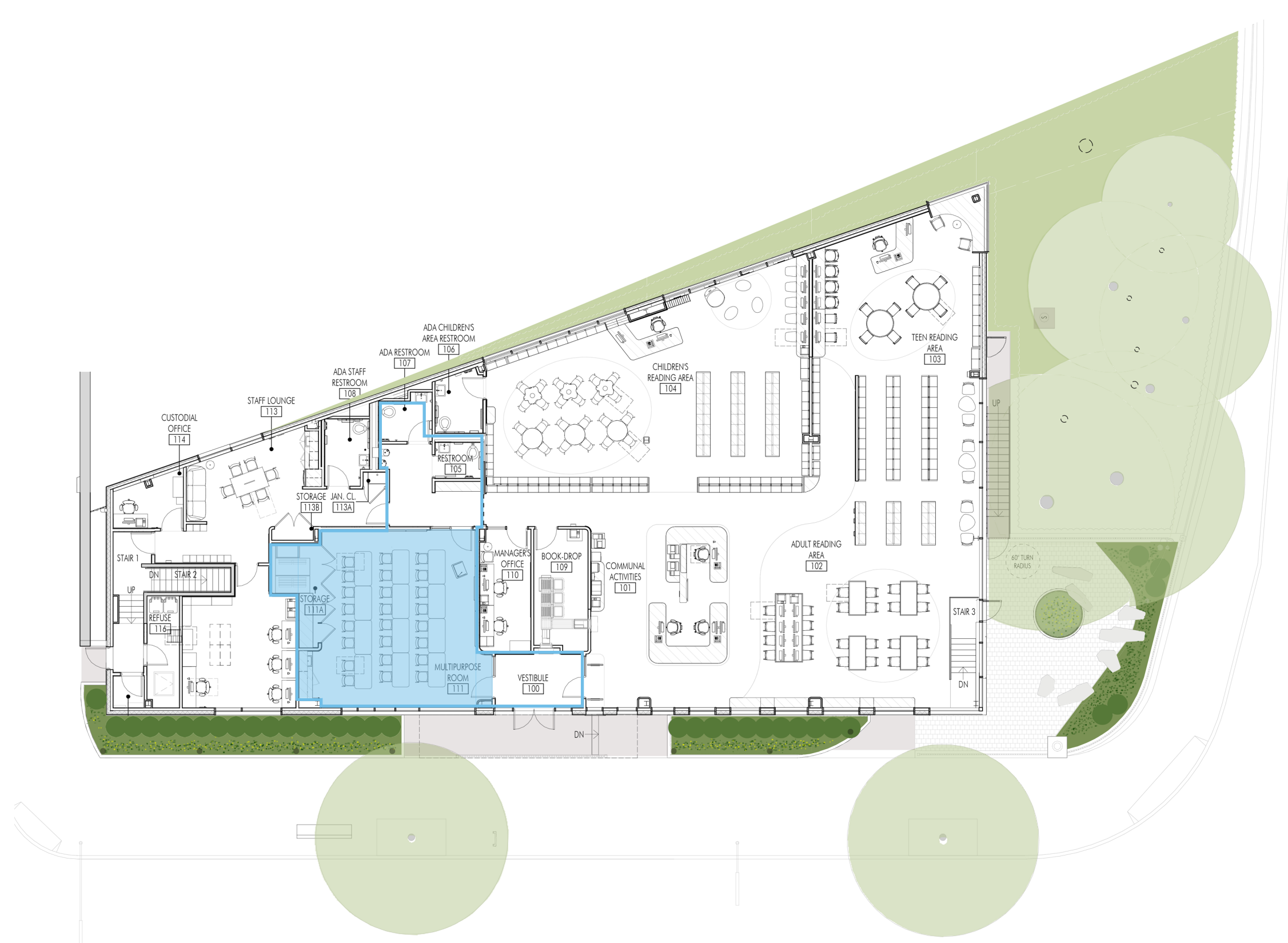
TEENS



ADULTS



WELCOMING THE COMMUNITY





ANNA KILLION | OUTREACH COORDINATOR
Office of Community Outreach & Notification (OCON), Public Buildings
NYC Department of Design and Construction
Mobile: 347.374.0930
Email: KillionAn@ddc.nyc.gov